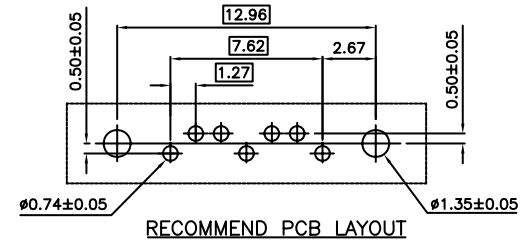
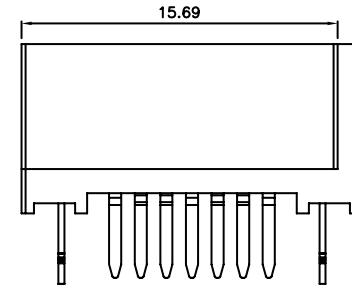
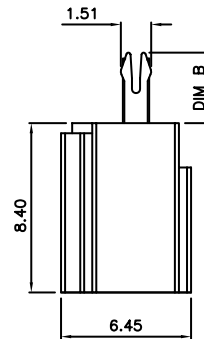


SECTION A-A  
SCALE 1 : 1



PART NO	PLATING	DIM A	DIM B	MATERIAL&COLOR
W300-0712-0130-Z	15U*	L=2.10mm	2.50	LCP BLACK
W300-0712-0130-Z6	15U*	L=3.20mm	3.50	PA46 BLUE
W300-0712-0110-Z6	G/F			
W300-0712-0130-Z7	15U*	L=2.10mm	2.50	PA46 RED
W300-0712-0110-Z7	G/F			
W300-0712-0130-Z0	15U*	L=2.10mm	2.50	PA46 BLUE
W300-0712-0110-Z0	G/F			
W300-0712-0130-Z1	15U*	L=2.10mm	2.50	PA46 BLACK
W300-0712-0110-Z1	G/F			
W300-0712-0130-Z9	15U*	L=2.45mm	2.50	PBT BLACK
W300-0712-0110-Z9	G/F			
W300-0712-0130-Z8	15U*	L=2.45mm	2.50	LCP ORANGE
W300-0712-0110-Z8	G/F			
W300-0712-0150-Z2	30U*			
W300-0712-0130-Z2	15U*	L=2.45mm	2.50	
W300-0712-0110-Z2	G/F			
W300-0712-0150-Z4	30U*			
W300-0712-0130-Z4	15U*	L=3.20mm	3.50	LCP BLACK
W300-0712-0110-Z4	G/F			
W300-0712-0130-Z5	15U*	L=3.20mm	2.50	
W300-0712-0110-Z5	G/F			

**HOW TO ORDER:**

W 3 0 0 - 0 7 1 2 - 0 1 X X - Z X

**SELECTIVE CONTACT PLATING:**

- 1 - 0.127 mm [5 μ"] SELECTIVE GOLD PLATING
- 3 - 0.381 mm [15 μ"] SELECTIVE GOLD PLATING
- 5 - 0.762 mm [30 μ"] SELECTIVE GOLD PLATING

μ

**PACKAGING:**  
0 - Tube

**INSULATOR COLOR**  
See Table

**RoHS COMPLIANT**

**ELECTRICAL:**

- CURRENT RATING: 1.5 A
- VOLTAGE RATING: 12 VAC max.
- CONTACT RESISTANCE: 30 mΩ max.
- DIELECTRIC WITHSTANDING VOLTAGE: 500 VAC for 1 min (sea level)
- INSULATION RESISTANCE: 1000 MΩ min.

**MATERIAL:**

- INSULATOR: Thermoplastic - 30% Glass Fiber Reinforced UL94 V-0; Color Black
- INSULATOR COLOR OPTIONS: Blue, Red, Orange (Consult SMP Technology for Part Number)
- CONTACTS: Copper Alloy
- CONTACT PLATING: Selective Gold Plated on Contact Area Over 50 μ" Min. Ni Under Plate 100 μ" Min. Tin Plating on Solder Tails

**ENVIRONMENTAL:**

OPERATING TEMPERATURE : -20°C to 85°C

Rev	Drawn	Checked	Approved	Date
0	B.S.	S.M.	S.M.	3/11/11

**SMP TECHNOLOGY, INC.**

SATA, 7 Pin, Male Plug, Vertical, Standard, Thru Hole Mount, Four Side

SCALE: N/A Shrouded

TOL. DEC. .X +/- 0.30 .XX +/- 0.25 .XXX +/- 0.13 ANGLE +/- 3° UNIT: mm

P/N: W300-0712-01XX-Z