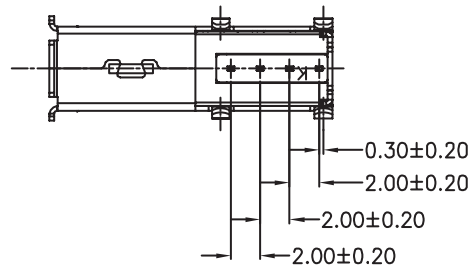


RECOMMENDED P.C.B HOLE LAYOUT  
TOP VIEW(TOLERANCE:±0.10)



**ELECTRICAL:**

CONTACT RESISTANCE:  
< 30mW Max.  
INSULATOR RESISTANCE:  
> 1000MW Min.  
DIELECTRIC WITHSTANDING VOLTAGE:  
1000VAC for 1 Minute  
OPERATING TEMPERATURE: -55° C to +105° C

**MATERIAL:**

INSULATOR: Thermoplastic UL94V-0  
CONTACTS: Copper Alloy  
FINISH: Plated Gold in Tin/Lead On Solder Tails  
SHELL: Nickel Plated

**HOW TO ORDER:**

U   0   0   1 - 0   4   3   X - 1   0   X - Z

**NUMBER OF CONTACTS:**  
04 - 4 PIN SINGLE PORT

**DEFINITION:**  
3 - Right Angle (Upright) Thru Hole

**INSULATOR COLOR:**  
0 - BLACK  
1 - WHITE

**SHELL STYLE:**  
1 - Standard - No Front Grounding Springs

**SELECTIVE CONTACT PLATING:**  
1 - Gold  
3 - 15u" Gold  
4 - 30u" Gold

**# of LOCKS**  
0 - Standard 2 Locks (Top, Bottom, Sides)

RoHS  
COMPLIANT

Rev	Drawn	Checked	Approved	Date
0	A.M.	S.M.	S.M.	10/06/03
A	A.M.	S.M.	S.M.	10/28/04
B	B.S.	S.M.	S.M.	07/18/08

<b>SMP TECHNOLOGY, INC.</b>
USB Connector, Single Port, Right Angle, Upright, Type A