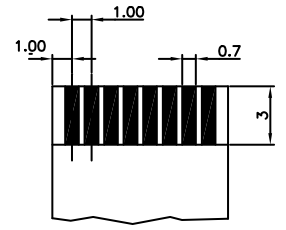
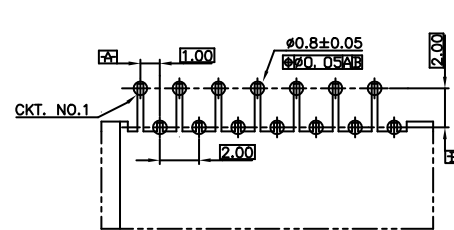
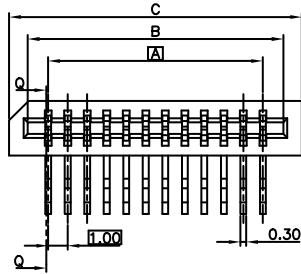
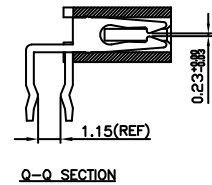


DIM A=1mm*(CKT-1)
 DIM B=DIM A+2.1mm
 DIM C=DIM A+4mm

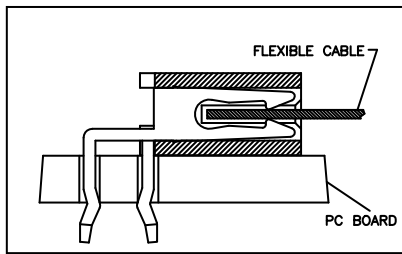
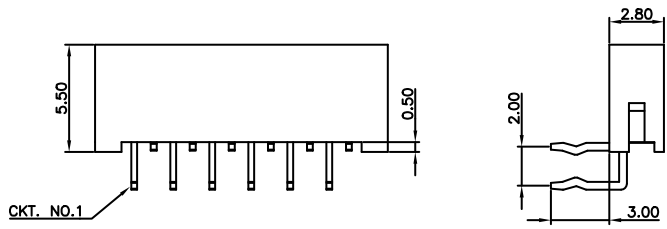


PCB Board Layout
 Component Side
 PCB T = 0.6mm

FFC/FPC DIMENSION
 THICKNESS 0.25 ~ 0.32mm
 TOLERANCE: 0.05mm



Q-Q SECTION

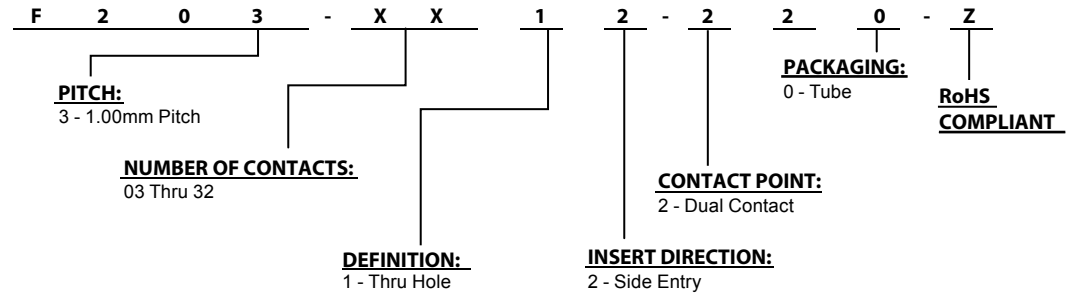


ELECTRICAL:
 CURRENT RATING: 0.5A
 CONTACT RESISTANCE:
 < 30 Milliohm Max.
 INSULATION RESISTANCE:
 > 100Megaohm Min.
 DIELECTRIC WITHSTANDING VOLTAGE:
 50 V (rms) AC for 1 Minute
 OPERATING TEMPERATURE: -40°C to + 105°C

MATERIAL:
 INSULATOR: Thermoplastic, Nylon 46
 FLAMMABILITY RATING: UL 94V-0
 CONTACT MATERIAL: Copper Alloy
 PLATING: Tin Plating Over Nickel

SOLDERABILITY:
 PER MIL-STD-202F Method 208D

HOW TO ORDER:



Rev	Drawn	Checked	Approved	Date	SMP TECHNOLOGY, INC. FFC Connector, LIF, Reverse, 1.0mm Pitch, Side Entry, Dual Point Contact
0	B.S.	S.M.	S.M.	03/01/07	