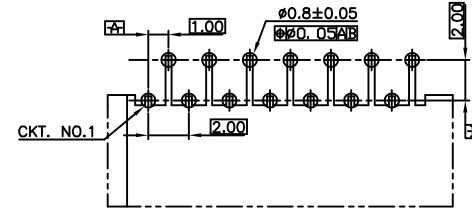
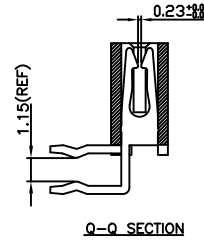
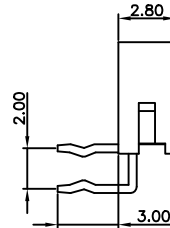
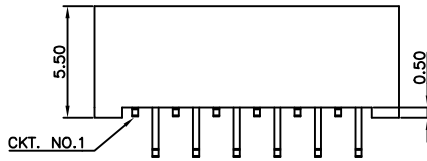
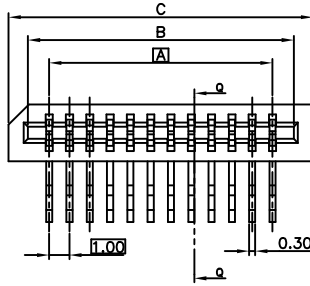
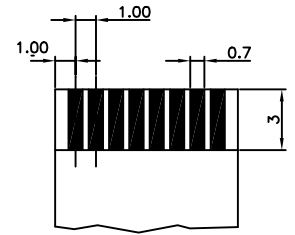


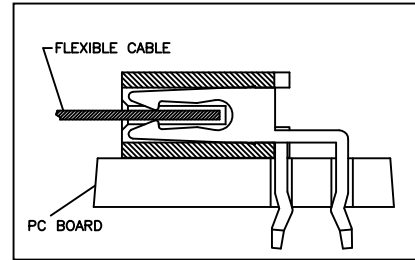
DIM A=1mm\*(CKT-1)  
 DIM B=DIM A+2.1mm  
 DIM C=DIM A+4mm



PCB Board Layout  
 Component Side  
 PCB T = 0.6mm



FFC/FPC DIMENSION  
 THICKNESS 0.25 ~ 0.32mm  
 TOLERANCE: 0.05mm



**ELECTRICAL:**

CURRENT RATING: 0.5A  
 CONTACT RESISTANCE:  
 < 30 Milliohm Max.  
 INSULATION RESISTANCE:  
 > 100Megaohm Min.  
 DIELECTRIC WITHSTANDING VOLTAGE:  
 50 V (rms) AC for 1 Minute  
 OPERATING TEMPERATURE: -40°C to + 105°C

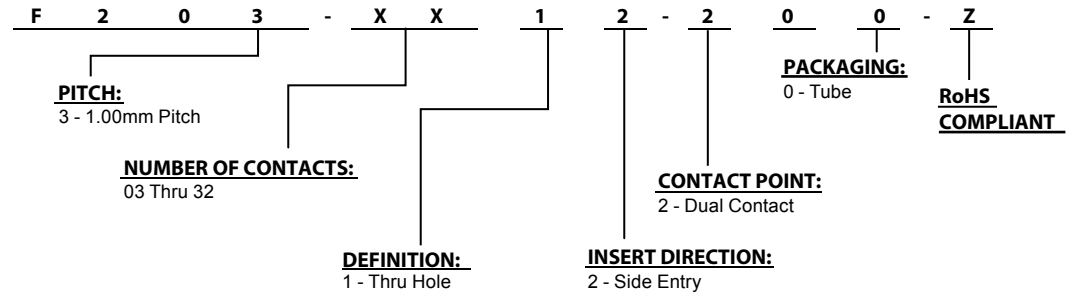
**MATERIAL:**

INSULATOR: Thermoplastic, Nylon 46  
 FLAMMABILITY RATING: UL 94V-0  
 CONTACT MATERIAL: Copper Alloy  
 PLATING: Tin Plating Over Nickel

**SOLDERABILITY:**

PER MIL-STD-202F Method 208D

**HOW TO ORDER:**



Rev	0	Issued	Drawn	B.S.	Checked	S.M.	Approved	S.M.	Date	03/01/07	<b>SMP TECHNOLOGY, INC.</b>  FFC Connector, LIF, Standard, 1.0mm Pitch, Side Entry, Dual Point Contact
TOL. DEC.	.X +/- 0.25	.XX +/- 0.20	.XXX +/- 0.10	ANGLE +/-	2°	UNIT:	mm	P/N: F203-XX12-200-Z		Pg. 1 of 1	