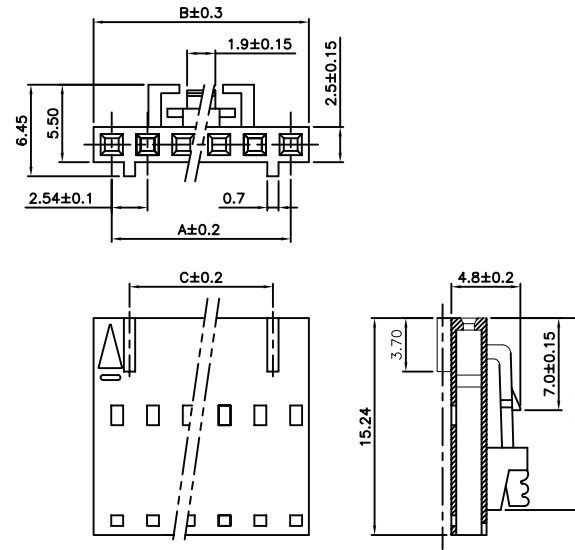


RECEPTACLE CONTACT HOUSING

Poles	Dimensions(mm)		
	A	B	C
2	2.54	5.08	-----
3	5.08	7.62	-----
4	7.62	10.16	5.08
5	10.16	12.70	7.62
6	12.70	15.24	10.16
7	15.24	17.78	12.70
8	17.78	20.32	15.24
9	20.32	22.86	17.78
10	22.86	25.40	20.32
11	25.40	27.94	22.86
12	27.94	30.48	25.40
13	30.48	33.02	27.94
14	33.02	35.56	30.48
15	35.56	38.10	33.02
16	38.10	40.64	35.56
17	40.64	43.18	38.10
18	43.18	45.72	40.64



HOW TO ORDER:

B 7 0 5 - X X 3 0 - 0 0 9 - Z

NUMBER OF POSITIONS:
02 thru 18

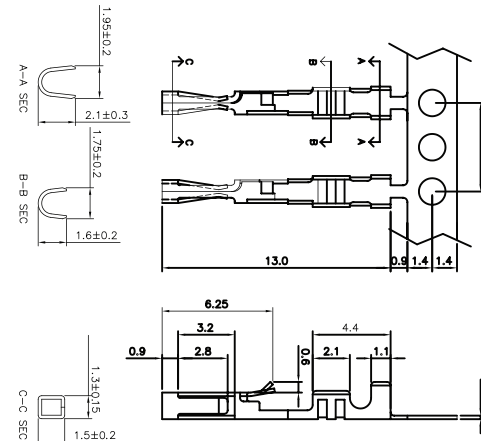
RoHS COMPLIANT

* Material: Nylon UL 94V-0

* Current rating : 3A, AC/DC

* Voltage rating : 250V, AC/DC

CONTACTS



HOW TO ORDER:

B 7 0 5 - 0 0 0 2 - 0 0 X - Z

CONTACT PLATING:

0 - GOLD FLASH
8 - TIN PLATED

RoHS COMPLIANT

ELECTRICAL:

CURRENT RATING: 3A

CONTACT RESISTANCE: < 15m Ω

INSULATOR RESISTANCE: > 1000M Ω

DIELECTRIC WITHSTANDING VOLTAGE: 600VAC FOR 1 MIN.

OPERATING TEMPERATURE: -40°C TO +105°C

MATERIAL:

INSULATOR: POLYESTER (UL94V-0)

CONTACT: COPPER ALLOY

Rev		Apv.	Date	SMP TECHNOLOGY, INC.			
0	Issued	D.H	2/27/04				
A	Added RoHS	WHS	3/31/06				
SCALE		MAT'L		FINISH		B705 Receptacle Housing & Contacts	
TOL. DEC.	.X +/- 0.35	.XX +/- 0.25	.XXX +/-	ANGLE +/-	UNIT: mm	SERIES: B 7 0 5	Pg: 1