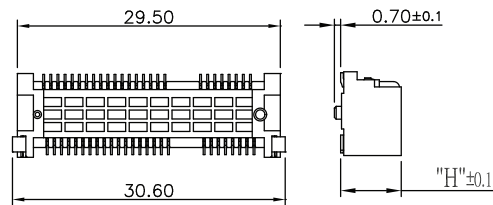


Recommended Module Insertion Angle

Recommended P.C. Board Layout FOR STAND OFF TYPE



**HOW TO ORDER:**

0 3 2 - 5 2 X 0 - X 0 X - Z

**B**

**# OF CIRCUITS**

52

**COLOR:**

0 - Beige  
1 - Black

**FULL GOLD PLATING:**

0 - 3u" Gold  
1 - 15u" Au

**RoHS COMPLIANT**

**HEIGHT (H):**

- 1 - (H)5.20mm (A) 3.3mm (B) 2.8mm
- 2 - (H)6.75mm (A) 4.9mm (B) 4.4mm
- 3 - (H)5.60mm (A) 3.7mm (B) 3.2mm
- 4 - (H)8.00mm (A) 6.1mm (B) 5.6mm
- 5 - (H)9.20mm (A) 7.3mm (B) 6.8mm
- 6 - (H)4.00mm (A) 2.1mm (B) 1.6mm
- 7 - (H)9.90mm (A) 9.95mm (B) 6.3mm
- 8 - (H)10.5mm (A) 8.55mm (B) 8.05mm

**NOTES:**

**Mechanical Specifications:**

PCB Insertion Force: 2.3kgf Max;  
Withdrawal force: 2.3kgf Max;  
Durability: Insertion/withdrawl: 50 Cycles

**Material Specifications:**

Housing: High Temperature Plastic UL 94V-0  
Contact: Copper Alloy  
Plating: Specified Gold Thickness in Contact Area  
Au Flash on P.C. Tail Soldering Area  
Latch: Stainless Steel

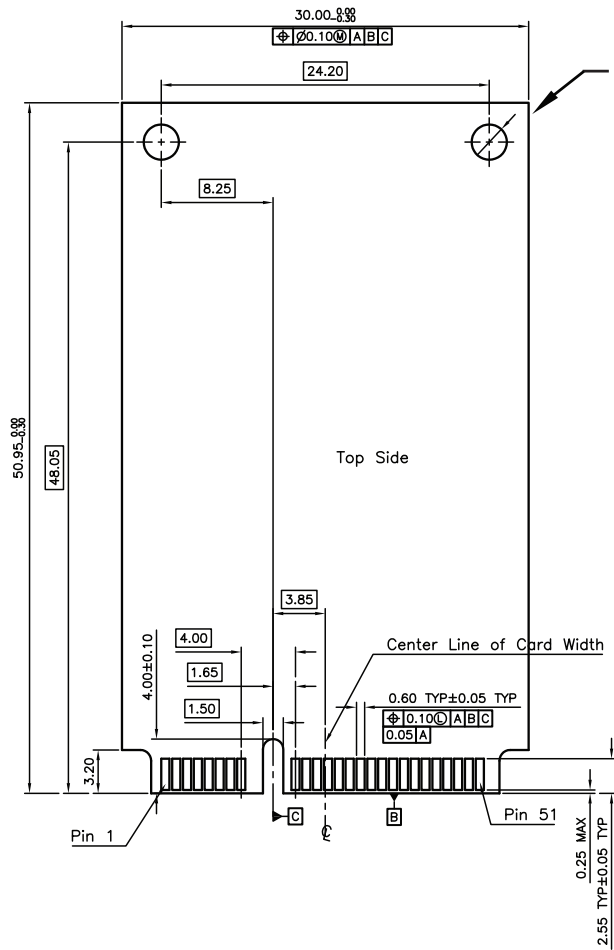
**Electrical Specifications:**

Voltage rating: 50V AC per contact;  
Current rating: 0.5 AMP per contact;  
Dielectric withstanding voltage: 300V AC RMS (Min);  
Insulation resistance: 500 Megohms at 500V DC Min;  
Contact resistance: 55 milliohms Max (initial);  
Operating Temperature: -50° C To +85° C

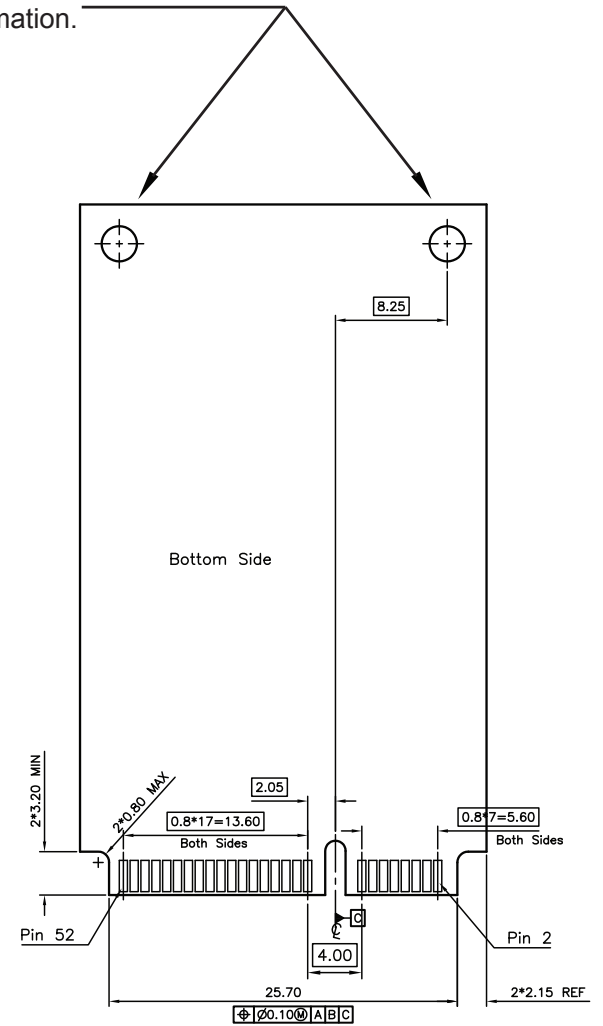
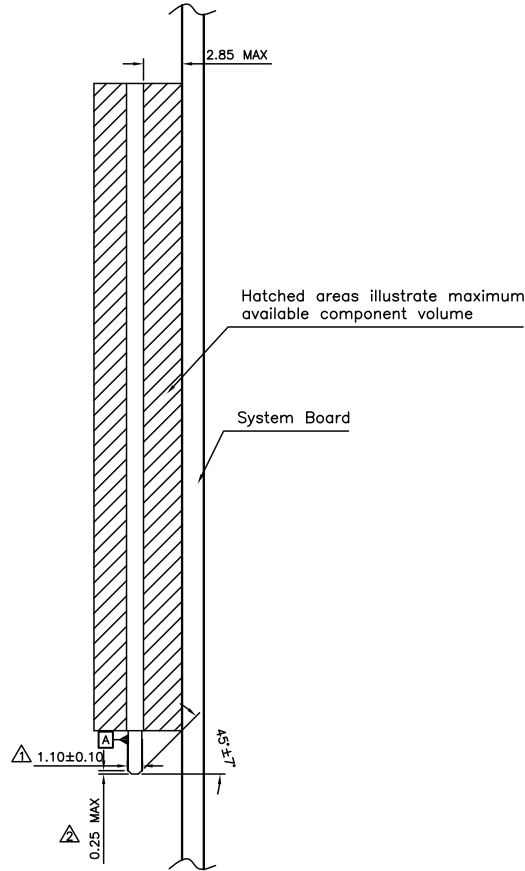
Rev	Drawn	Checked	Approved	Date
0	B.S.	S.M.	S.M.	03/28/07
A	B.S.	S.M.	S.M.	05/19/11

**SMP TECHNOLOGY, INC.**

PCI Express Mini Card Connector, 52 Circuit



Hole Locations (2) for PCB Support.  
See Page 3 for Screw & Stand Off Ordering Information.



- NOTES:
- Pin numbering reference:  
Odd pins - Top Side  
Even pins - Bottom Side
  - Card thickness applies across tabs and includes plating and/or metallization.
  - Edge bevel must be present and free of cutting burrs from PCB and contact materials.

**SMP TECHNOLOGY, INC.**

PCI Express Mini Card Connector, 52 Circuit

TOL. DEC. .X +/- 0.25

.XX +/- 0.15

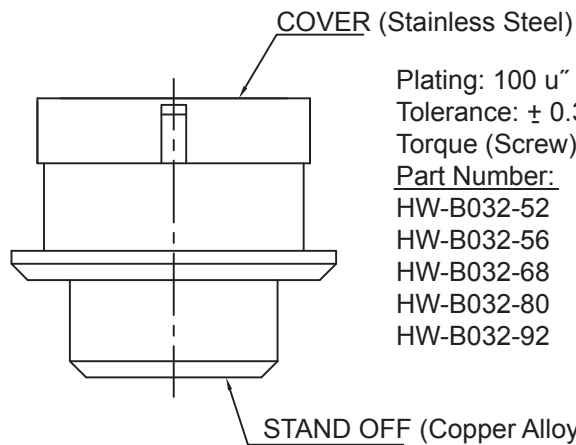
.XXX +/-

ANGLE +/-

UNIT: mm

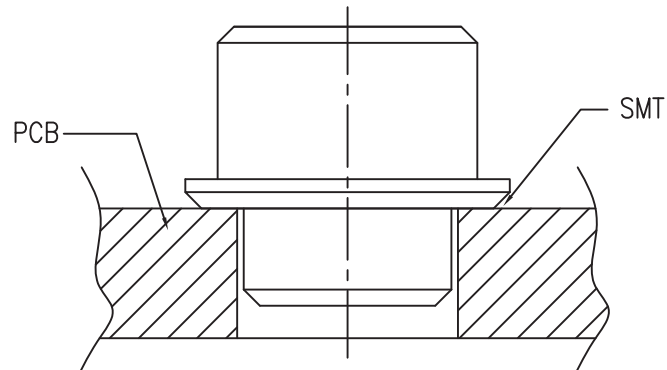
P/N: B 032-52X0-X0X-Z

Pg: 2/4



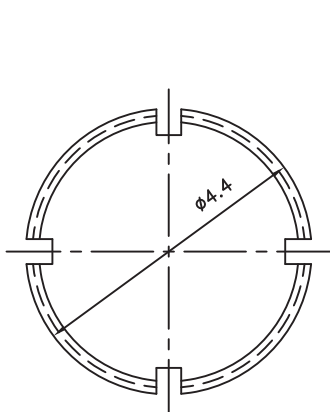
Plating: 100 u" Sm(Min.)  
 Tolerance: ± 0.3  
 Torque (Screw): 2.5kg - Cm Max.  
 Part Number: "D" ± 0.1

HW-B032-52	2.8
HW-B032-56	3.2
HW-B032-68	4.4
HW-B032-80	5.6
HW-B032-92	6.8

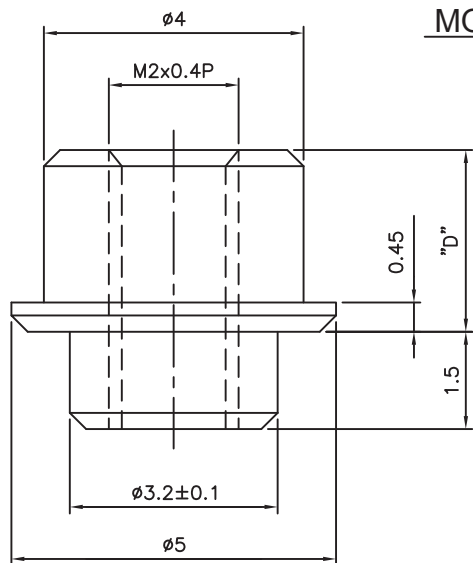
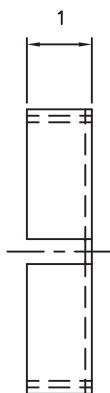


ASSEMBLY

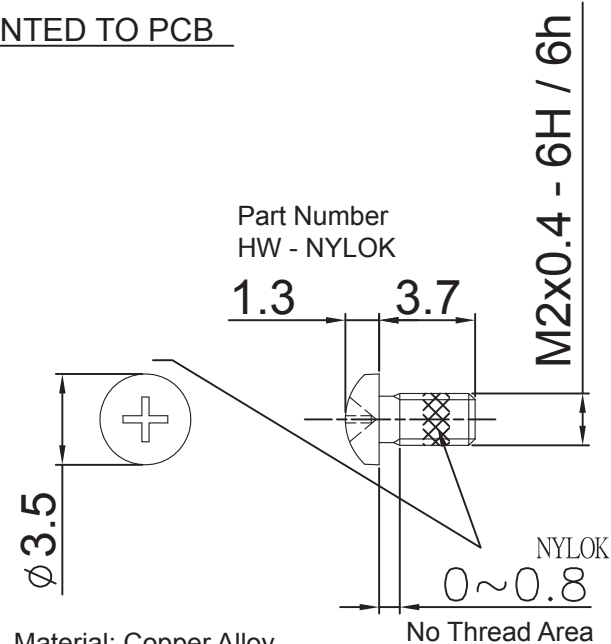
MOUNTED TO PCB



COVER

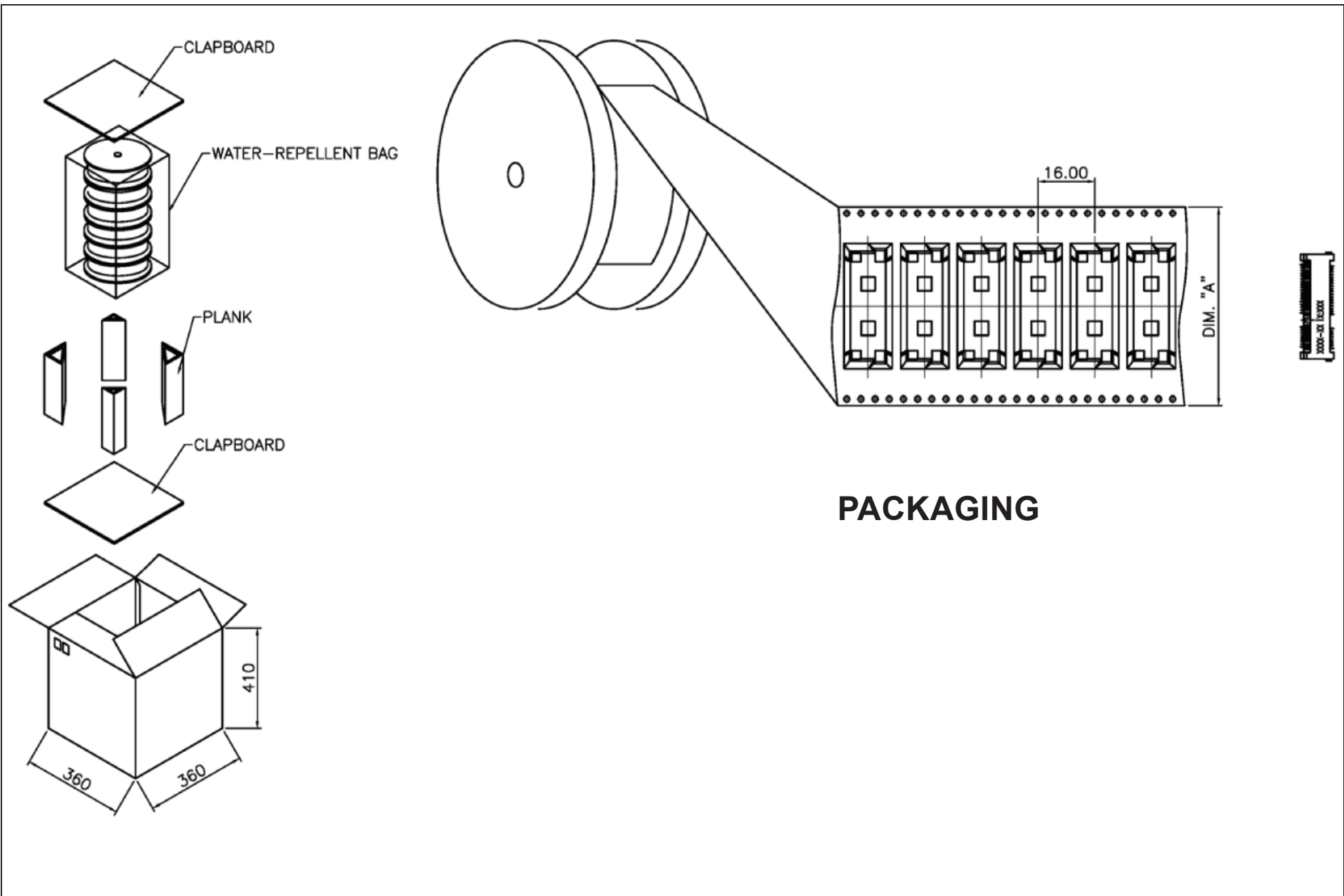


STAND OFF



Material: Copper Alloy  
 Plating: Nickel  
 Screw Torque: 2.04 Kg - Cm Max.  
 First Strip: 0.20 Kg - Cm Min.  
 Fifth Strip: 0.10 Kg - Cm Min.  
 General Tolerance ± 0.3

**SMP TECHNOLOGY, INC.**



**PACKAGING**

TOL. DEC.	.X +/- 0.25	.XX +/- 0.15	.XXX +/-	ANGLE +/-	UNIT: mm

<i>SMP TECHNOLOGY, INC.</i>	
Pg: 4/4	